

# PEREGRINES

secondary, warm, cool

colour, line, shape, texture, blending

Mondrian

Giuseppe  
Arcimboldo

Andy Goldsworthy

Tom Percival

(local)

**Project**

**Medium**

**Steps**

**Artist Link**

**Example**

AUTUMN 1

W1

**Self Portraits**

Graphite pencil

Features, Scale

**Observational - Mirrors**



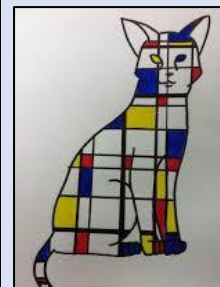
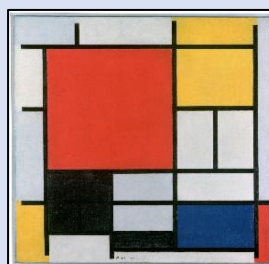
W2

**Colour Theory /  
Mixing**

Colour mixing

tones, primary secondary,  
cool and warm, tints and  
shades

**Mondrian**



W3

W4

W5

W6

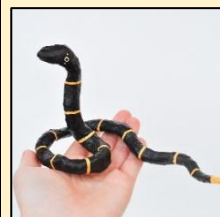
W7

**World  
Awareness**

Sculpture - Snakes  
around Tree Trunk

sculpture  
expression  
technique

**Natural World - Brazil**



W8

AUTUMN 2

W1

**Bonfire**

collage

warm and cool colours  
shape texture  
contrast



W2

W3


W4

W5



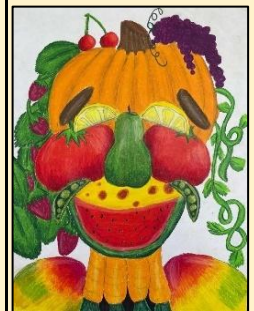
W6

W7

SPRING 1

W1	<b>Sketching</b>	Observational sketching	sketch shade value observational	<b>Observational</b>	
W2					
W3					
W4					


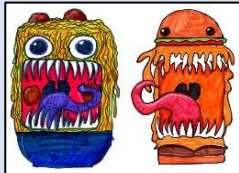



W5					
W6					

W1	<b>Edible Faces</b>	paint and printing	texture colour features	shape	<b>Giuseppe Arcimboldo</b>   
W2					
W3					

SPRING 2

W4					
W5					
W6					
W7					

## SUMMER 1

W1	Cartoons come to Life	Graphite pencil & Colouring Pencils	line expression	Tom Percival		
W2						
W3	UV Art	Neon Paint, Highlighters	collaboration exhibition community	Insects of the Enchanted Woods		
W4	Assessments - Theory & Disciplinary Quiz. Practical Skills - Colour Mixing					
W1	Nature Sculptures	Natural Resource Collage Photography	sculpture pattern warm / cool colours composition	Andy Goldsworthy		
W2						
W3	ART EXHIBITION 17th - 19th June					
W4						
W5						
W6						
W6						
W7						

## SUMMER 2

# OSPREYS

tints, shades

composition, expression, contemporary, historical, influence,

Georgia O'Keeffe

Yayoi Kusama

Jackie Morris

Henri Rousseau

**Project**

**Medium**

**Vocab**

**Artist Link**

**Example**

AUTUMN 1

W1

**Retrieval:**

Slides

**Colour Theory**

primary, secondary  
complimentary, tint, shade

**Elements of Art**

Colour, Line, Tint, Shape,

**Mediums**

List all mediums used

**Artists**

Group artwork examples - activity to promote artistic vocab

W2

**Self-Portraits**

Observational Skills

Features  
Sketch  
Soft / Firm Pressure

**Observational - Mirrors**



W3

W4

W5

W6

AUTUMN 2

W7

**World  
Awareness El  
Salvador**

Sculpture - Butterfly  
and Flower

sculpture  
expression  
technique

**Natural World - El Salvador**



W8

W1

W2

W3

W4

W5

**Owls**

Oil Pastels & Colouring  
pencils

tints and shades  
form  
composition

**Jackie Morris**



W6

W7

**Clay Part 2**

Painting




Slip, score, fire,  
kiln




SPRING 1

W1	<b>Weaving Blankets</b>	Textiles - Weaving,	texture tints shades complementary warm/cool colours	<b>Local Stroud Mill Textile History</b>	
W2					
W3					
W4					
W5					
W6					

SPRING 2

W1					
W2					
W3					
W4	<b>Hiding Tucans</b>	Water colours, acrylics, collage	collage, composition, warm and cool colours	Henri Rousseau	
W5					
W6					
W7					

SUMMER 1

W1	UV Art	Neon Paint, Highlighters	collaboration exhibition community	Insects of the Enchanted Woods	
W2					

W3					
----	--	--	--	--	--

W4	Assessments - Theory & Disciplinary Quiz. Practical Skills - Tones and Shades				
----	---	--	--	--	--

W1					
W2					

W3	ART EXHIBITION 17th - 19th June				
----	---------------------------------	--	--	--	--

SUMMER 2

W4					
----	--	--	--	--	--

W5	Woodchester Mansion	Linked to Local History Unit (KS2 Only)		Benjamin Foster 	
----	---------------------	---	--	---	---

W6					
W6					
W7					



# SPARROWHAWKS

Tertiary, complementary

Space, shape, translucent, opaque, symbolism, analogous

Frida Kahlo

David Hockney

Chris Mould

Benjamin Foster

Darrell Wakelam  
Henri Rousseau

**Project**

**Medium**

**Vocab**

**Artist Link**

**Example**

**Retrieval:**

Slides

**Colour Theory**

primary, secondary  
complimentary, tint, shade

**Elements of Art**

Colour, Line, Tint, Shape,

**Mediums**

List all mediums used

**Artists**

Group artwork examples - activity to promote artistic vocab

AUTUMN 1

W1

W2

W3

W4

W5

W6

W7

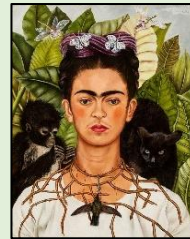
W8

**Self-Portraits**

Graphite Pencil (pencil  
grades)

Features  
Sketch  
Soft / Firm Pressure  
Influence  
Composition  
Proportion

**Frida Kahlo**



**Darrell Wakelam, Henri Rousseau &  
Mexico**

**World  
Awareness -  
Mexico**

Sculpture - Wild Cat  
Masks

sculpture  
expression  
technique



AUTUMN 2

W1

W2



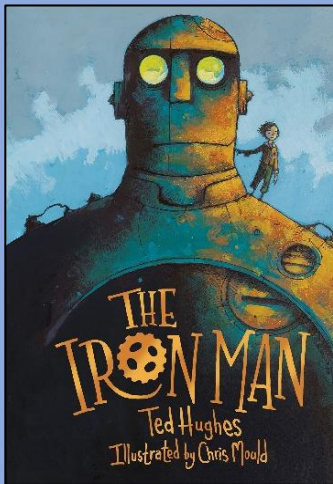



W3

W4

W5

W6

W7

W1	Water Colour - Techniques and Theory				
W2	Silver Burch	Water colours & Charcoal	space composition contrast tertiary perspective analogous	David Hockney	
W3					
W4					
W5	Chalk Iron Man	Chalk pastels	shading, value, smudging	Chris Mould (linked to English unit)	
W6					
W1					
W2					
W3					
W4	Clay Gargoyles	Linked to Local History Unit	texture, form, pinch pots, slip and score	Benjamin Foster (local history)	
W5					
W6					
W7	Junk Robots	junk metal, acrylic paint, cardboard	3d, sculpture, metallic, texture, scale	Chris Mould	



SUMMER 1

W1	UV Art	Neon Paint, Highlighters	collaboration exhibition community	Enchanted Woods Pond, fish & lillipads	
W2					
W3					
W4	Assessments - Theory & Disciplinary Quiz. Practical Skills - Colour Mixing				

SUMMER 2

W1					
W2					
W3	ART EXHIBITION 17th - 19th June				
W4					
W5	Woodchester Mansion	Linked to Local History Unit	Sketching	Benjamin Foster 	
W6					
W6					
W7					

# GOSHAWKS

Analogous, Value, Form

Observational, iridescent, application, contemporary, historical

Frida Kahlo

Johannes  
Stoetter

Gustav Klimt  
Lina Viktor

Darrell Wakelam  
Henri Rousseau

**Project**

**Medium**

**Vocab**

**Artist Link**

**Example**

**Retrieval:**

Slides

**Colour Theory**

primary, secondary, tertiary  
complimentary, analogous, tint, shade

**Elements of Art**

Colour, Line, Tint, Shape,

**Mediums**

List all mediums used

**Artists**

Group artwork examples - activity to promote artistic vocab

AUTUMN 1

W1

W2

W3

W4

W5

W6

**Self-Portraits**

Graphite Pencil (pencil  
grades)

observational  
Sketch  
Soft / Firm Pressure  
Influence  
Composition  
Proportion

**Frida Kahlo**



W7

W8

**World  
Awareness**

Sculpture -  
Collaborative School  
Project Rainforest

sculpture  
expression  
technique

**Darrell Wakelam, Henri Rousseau &  
Honduras**



AUTUMN 2

W1

W2

W3

W4

W5

W6

W7

W1	Egyptian Portraits	Photography Staining	iridescent colour shape historical application	Gustav Klimt 					
W2		Paint							
W3		Coloured Pencils		Lina Viktor 					
W4									
W5									
W6									
W1	Ceramic Nature Games Boards	Clay	form observational	Observational					
W2									
W3									
W4									
W5									
W6	PART 2	Acrylic paint and glaze	Painting, glaze, kiln						
W7									

## SUMMER 1

W1				Johannes Stoetter	
W2					
W3	UV Art	Neon Paint, Highlighters	collaboration exhibition community	Fairies and Hobbits of the Enchanted Woods	
W4	Assessments - Theory & Disciplinary Quiz. Practical Skills - Blending in 4 mediums				

## SUMMER 2

W1					
W2					
W3	ART EXHIBITION 17th - 19th June				
W4					
W5	Woodchester Mansion	Linked to Local History Unit		Benjamin Foster 	
W6					
W6					
W7					

# EAGLES

Art movements, manipulation, aesthetics,

Reviewing all vocabulary

Frida Kahlo

Lucien Freud

Darrell Wakelam

Johannes Stoetter

David Hockney  
Henri Rousseau

**Project**

**Medium**

**Vocab**

**Artist Link**

**Example**

**Retrieval:**

Slides

**Colour Theory**

primary, secondary, tertiary  
complimentary, analogous, tint, shade

**Elements of Art**

Colour, Line, Tint, Shape,

**Mediums**

List all mediums used

**Artists**

Group artwork examples - activity to promote artistic vocab

AUTUMN 1

W1

W2

W3

W4

W5

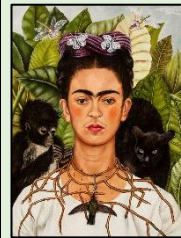
**Self-Portraits**

Graphite Pencil (pencil  
grades)

observational  
Sketch  
Soft / Firm Pressure  
Influence  
Composition  
Proportion

Lucien Freud

Frida Kahlo



W6

W7

W8

**World Awareness -  
Guatemala**

Sculpture -  
Collaborative School  
Project Rainforest

sculpture  
expression  
technique

Darrell Wakelam, Henri Rousseau &  
Guatemala



AUTUMN 2

W1

W2

W3

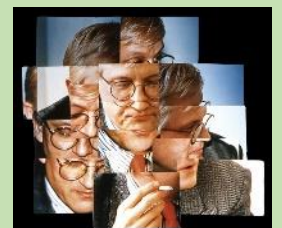
W4

**Surrealism  
Photography**

Photography

aesthetics  
manipulation

David Hockney



W5

W6




W7

SPRING 1

W1	Egyptian Canopic Jars PART 1	Clay	iridescent colour shape historical application		
W2	Texture Sketching	Water Colours & Detail pencils	observation blending negative space	David Attenborough Inspired	
W3					
W4					
W5					
W6					
W1	PART 2	Clay	Painting		
W2					
W3					
W4					
W5					
W6	UV Art	Neon Paint, Highlighters	collaboration exhibition community	Protectors of the Enchanted Woods	
W7					



SUMMER 1

W1	<b>Camouflage</b>	Painting, tints & shades	camouflage colour blending	Johannes Stoetter	
W2					
W3					

W4	<b>Assessments - Theory &amp; Disciplinary Quiz. Practical Skills - Shading / Value</b>				
----	---	--	--	--	--

SUMMER 2

W1					
W2					
W3	<b>ART EXHIBITION 17th - 19th June</b>				
W4					
W5	<b>Woodchester Mansion</b>	Linked to Local History Unit		Benjamin Foster	 
W6					
W6					
W7					





