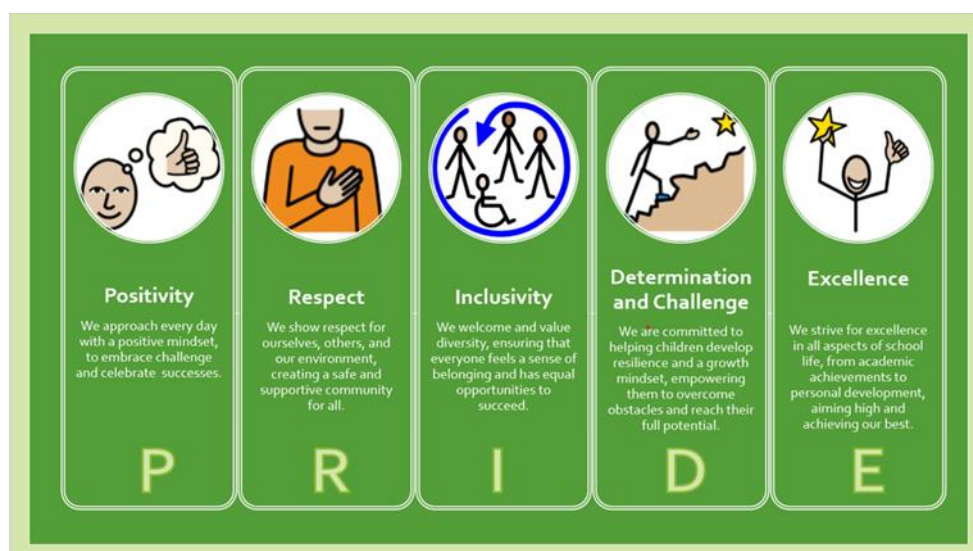


Gastrells Community Primary School

Offer of Early Help



Last reviewed on: May 2025

Next review due by: May 2027

Early Help

Everyone needs help at some time in their lives and therefore an ethos of Early Help is important for any school. Within Gloucestershire, the Early Help Partnership is coordinated by Families First Plus but all organisations working with children and young people should view themselves as part of the Early Help Partnership. The co-ordinated Gastrells offer of Early Help is outlined in the following table. We believe that early interventions for children or families, in many cases, will prevent children from experiencing harm. Gastrells offers a number of early preventative measures. Expert and professional organisations are best placed to provide up-to-date guidance support and intervention on specific safeguarding issues when and if they arise. School will refer to appropriate agencies when help is required to support children, young people or families or to prevent harm. All staff must be aware of the Offer of Early Help: Gloucestershire Early Help and Targeted Support. At all times all staff should consider if there is any offer of early help that we can make in order to help a child thrive. Our aim is to help pupils and families as early as possible when issues arise: 'the right help at the right time to stop any issues getting worse'. Early help is an approach not necessarily an action. It includes prevention education as well as intervention where necessary or appropriate. In some cases, immediate urgent action might be necessary if a child or young person is at risk of immediate harm.

GASTRELLS OFFER OF EARLY HELP:

Universal source of help for all families in Gloucestershire: Gloucestershire Family Information Service (FIS)	Gloucestershire Family Information Service (FIS) advisors give impartial information on childcare, finances, parenting and education. FIS are a useful source of information for parents and professionals. They support families, children and young people aged 0-19 years of age (25 for young people with additional needs) and professionals working with these families. They can help link parents up with other organisations that might be able to help or provide the information themselves e.g. parents could ask them about holiday clubs for your children across Gloucestershire. Contact the FIS by emailing: familyinfo@gloucestershire.gov.uk telephone: (0800) 542 0202 or (01452) 427362. FIS also have a website which has a wealth of information to support many issues such as childcare and support for children with disabilities. Glosfamilies Directory For information for Children and Young People with Special Education Needs and Disabilities (SEND) go to the SEN and Disability 'Local Offer' website page: SEND Local Offer
GSCB (Gloucestershire Safeguarding Children's Board) website.	http://www.gscb.org.uk Important information for parents and professionals across Gloucestershire in relation to keeping children safe and avenues of support including Early Help options.

GASTRELLS OFFER OF EARLY HELP:

Gastrells universal support for all pupils and families	<p>Gastrells universal support for all pupils and families. All staff are available in a pastoral capacity should parents have a concern about anything at all. Staff may not have the answer but will try to find out the answer or sign-post parents/other professionals in the right direction. Parents can either talk directly with the staff or telephone the Head. Staff are available within office hours (9am – 5pm on weekdays during term-time).</p> <ul style="list-style-type: none"> • General office number: 01453 765959 (to contact all staff). - Email – admin@gastrells.gloucs.sch.uk
Gastrells PSHCE / SMSC curriculum	<p>Gastrells has combined PSHE (Personal Social Health Education), SRE (Sex and Relationships Education) and SMSC (Spiritual Moral Social and Cultural) Education.</p> <p>Gastrells follow SCARF resources for PHSE and SMSC. This comprehensive curriculum covers many aspects of keeping young people safe, healthy, resilient and aware of the world around them so that they can make informed decisions.</p> <p>Where pupils have specific issues that need discussing or addressing we will make their wellbeing curriculum bespoke to them. Other specific topics helping pupils stay safe covered within the curriculum include(age appropriate content): Sex education: Children in Y5 and 6 have formal</p>
Home-school support	All of our Early Help is offered in partnership with parents / carers
E-safety	<p>E-safety is a key part of the ongoing (PSHE/SMSC/SRE) curriculum. Helpful websites for teaching staff and parents, including:</p> <ul style="list-style-type: none"> -PACE (parents against child exploitation) UK is a useful website to engage parents with e-safety issues. www.paceuk.info/ - www.thinkuknow.co.uk/parents (excellent resources) - http://educateagainsthate.com - www.internetmatters.org - https://ico.org.uk
Fiona Radway	Fiona is our SENDCo and family support. She is able to provide general emotional support for children and parents.

GASTRELLS OFFER OF EARLY HELP:

Bullying ((including cyber-bullying)/child death/suicide prevention)

.All Gloucestershire schools including Gastrells are committed to tackling bullying. We want to know immediately if there any issues with bullying at school so that it can be addressed. It could be that bullying is related to a child's home-school. School can also offer bespoke lessons on anti-bullying for anyone who has suffered bullying to encourage behaviours that might avert it in the future (e.g. assertiveness) or to boost self-esteem.

We have a series of teaching resources produced by the Gloucestershire Healthy Living and Learning Team (www.ghll.org.uk) to support this.

In serious cases of bullying parents should contact the police; particularly if there are threats involved. In an emergency call 999. Other sources of help and advice are:

www.gscb.org (Gloucestershire Safeguarding children's board)
<http://www.bullying.co.uk> . Gloucestershire Healthy Living and Learning team provide alerts and resources in relation to supporting young people being bullied.

Education about bullying is an integral part of the Gastrells Wellbeing programme www.ghll.org.uk. www.onyourmindglos.nhs.uk – This is a Gloucestershire website which also covers bullying as a topic and where to go for help. It is also part of the SCARF resources.

We provide nurture support through nurture, ELSA, small group and individual support, counselling and referrals to external agencies.

GASTRELLS OFFER OF EARLY HELP:

<p>Children or young people with multiple needs (vulnerable) or multiple needs (complex) requiring multi-agency input or assessment. KCSiE 2024 recognises that any child may benefit from early help but particularly identifies a child who:</p> <ul style="list-style-type: none"> • Is disabled & has specific additional needs • Has SEN • Is a young carer • Is showing signs of being drawn into anti-social, criminal behaviour, gangs • Is frequently missing/goes missing • Is at risk of modern slavery, trafficking or exploitation • Is at risk of being radicalised or exploited • Is dealing with challenging family circumstances e.g. drug, alcohol, misuse, • Is misusing drugs or alcohol themselves 	<p>Referrals are now handled centrally and then requests filtered in order to aid quick signposting and intervention.</p> <p>Advice may be sought via email: earlyhelp@gloucestershire.gov.uk</p> <p>Teams are made up of the following professionals Early Help coordinators; Community Social Worker and Family Support Workers.</p> <p>They all work together from one base so they can recognise and respond to local needs and act as a focal point for coordinating support for vulnerable children, young people and their families. Support provided includes: Support for school and community based lead professionals working with children and families; Collaboration with social care referrals that do not meet their thresholds, to co-ordinate support within the community; Work in partnership to support children with special educational needs in school; Advice and guidance from a social work perspective on a 'discussion in principle basis' ; Signpost children with disabilities and their families to access activities and meet specific needs; Advice and guidance to lead professionals and the provision of high quality parenting and family support services to families</p> <p>Gloucestershire Youth Support Team (YST):</p> <p>The Youth Support Team provide a range of services for vulnerable young people aged between 11 - 19 (and up to 25 for young people with special needs), including:</p> <ul style="list-style-type: none"> - Youth offending - Children in Care - Care leaver's support services (for those aged 16+) - Early intervention and prevention service for 11 - 19 year olds - Support for young people with learning difficulties and/or disabilities - Positive activities for young people with disabilities - Support with housing and homelessness - Help and support to tackle substance misuse problems and other health issues - Support into education, training and employment - Support for teenage parents <p>We are the Gloucestershire Youth Support Team</p> <p>https://youthsupportteam.co.uk/</p> <ul style="list-style-type: none"> • For General Enquiries: <p>T: 01452 415707</p> <p>E: info.glos@prospects.co.uk</p> <p>To make a referral:</p> <p>T: 01452 415707</p> <p>E: youthsupportteam@prospects.co.uk</p>
<p>Drug concerns</p>	<p>www.infobuzz.co.uk/: Info Buzz provides individual targeted support around drugs & emotional health issues, development of personal & social skills, and information & support around substance misuse. Drugs education is covered in the school curriculum. The Life Education Bus visits school as part of this provision (PSHE/SMSC) curriculum as a preventative measure. www.onyourmind.nhs.uk – advice on drug/alcohol misuse</p>

GASTRELLS OFFER OF EARLY HELP:

<p>Mental health concerns</p>	<p>Please note that in Gloucestershire CYPS (children and young people's services) replaced CAMHS (child and adolescent mental health services)</p> <p>www.onyourmindglos.nhs.uk – a newly launched website by Gloucestershire as part of the Future in Mind Programme. This website is good for young people, parents and professionals in terms of help with mental health issues and where to go for help.</p> <p>Referral to school nurses may be appropriate.</p> <p>Referral to CYPS (Gloucestershire's mental health services) via your own GP.</p> <p>For children/young people/adults with existing mental health difficulties concerns should be discussed with the existing medical professionals (consultant psychiatrists). In an emergency call 999 or 111.</p> <p>CYPS* Practitioner advice line (for professionals to call) tel: 01452 894272.</p> <p>MENTAL HEALTH curriculum taught explicitly through KS2 where appropriate linking in with SCARF PHSE scheme.</p> <p>In school support is from Nurture and ELSA</p>
<p>Child Sexual exploitation (CSE)</p> <p>"CSE is a form of sexual abuse. It occurs where an individual or group CSE screening tool (can be located on the GSCB website:</p> <p>cse-tool.docx</p> <p>This should be completed if CSE suspected.</p>	<p>Clear information about warning signs, the screening tool and Gloucestershire's multi-agency protocol for safeguarding children at risk of CSE are at cse-tool.docx</p> <p>Referrals should be made to Gloucestershire social care and the Gloucestershire Police through a Multi-Agency Safeguarding Hub (MASH) which will provide a single point of coordination of all referrals.</p> <p>www.nationalworkinggroup.org and PACE UK (Parents Against Child Sexual Exploitation) www.paceuk.info</p>

GASTRELLS OFFER OF EARLY HELP:

Domestic violence	<p>As part of this school's commitment to keeping children safe we have signed up to implement the principles and aims of the Gloucestershire Encompass Model. In signing up to Gloucestershire Encompass the Governing Body and Senior Leadership Team:</p> <ul style="list-style-type: none"> • Endorse the Gloucestershire Encompass Model and support the Key Adults in our school to fulfil the requirements of the Gloucestershire Encompass Protocol. • Promote and implement Gloucestershire Encompass processes and use these in accordance with internal safeguarding children processes. • Recognise the sensitive nature of the information provided and ensure that this is retained in accordance with the principles of data protection. <p>The GSCB (Gloucestershire Safeguarding Children's board) have published a Domestic Abuse pathway for educational settings which is on the GSCB website. If a child or young person is suspected of living at home with a domestically abusive parent or if a young person has domestic abuse in their own relationship, then the usual procedures should be followed and a referral made to the children's helpdesk (tel: 01452 426565). The response will according to the age of the young person so that the appropriate agencies are involved.</p> <p>Gloucestershire Domestic Abuse Support Service (GDASS) www.gdass.org.uk</p> <p>MARAC Gloucestershire Constabulary: Multi Agency Risk Assessment Conferences (MARACs) prioritise the safety of victims who have been risk assessed at high or very high risk of harm. The MARAC is an integral part of the Specialist Domestic Violence Court Programme, and information will be shared between the MARAC and the Courts, in high and very high risk cases, as part of the process of risk management.</p> <p>Gloucestershire Unborn Baby Protocol: Research indicates that young babies are particularly vulnerable to abuse but that work carried out in the antenatal period can help minimise harm if there is an early assessment, intervention and support. Working Together (2023) specifically identifies the need of the Unborn Child. Professionals should read and act upon the unborn baby protocol if there is suspected domestic violence and a pregnancy. The unborn baby protocol can be found Welcome to the Gloucestershire Safeguarding Children...</p>
Teenage relationship abuse	<p>Please see comment about the Domestic abuse pathway for educational settings above (in domestic violence section). www.gov.uk – home office 'teachers guide to violence and abuse in teenage relationships.' All violence or suspected violence should be reported the police and/or social care as appropriate.</p> <p>GDASS (Gloucestershire Domestic Abuse Support Service) can be referred to for support.</p> <p>Home - Gloucestershire Domestic Abuse Support Service (GDASS)</p> <p>Lead GHLL Teacher for advice and support with curriculum resources (tel: 01452 427208)</p> <p>Holly Gazzard Trust (local charity) – Home - Hollie Gazzard Trust</p>
Fabricated and induced illness (FII)	<p>http://www.nhs.uk/Conditions/Fabricated-or-induced-illness for information on behaviours and motivation behind FII. Any professionals suspecting FII must involve the Police, Social Services and follow the child protection procedures outlined in this document</p>
Faith abuse	<p>The Prevent duty: safeguarding learners vulnerable to radicalisation - GOV.UK</p>

GASTRELLS OFFER OF EARLY HELP:

Female genital mutilation (FGM)	<p>Female Genital Mutilation (FGM) comprises all procedures involving partial or total removal or the external female genitalia.</p> <p>FGM is illegal in the UK and as of October 2015 mandatory reporting commenced. If education staff or other professionals discovers that an act FGM appears to have been carried out on a girl under 18 years old there is a statutory duty for them PERSONALLY to report it to the police. http://www.nhs.uk/Conditions/female-genital-mutilation for NHS information and signs of FGM.</p> <p>Safeguarding women and girls at risk of FGM - GOV.UK</p> <p>Any suspicion of FGM should be referred to the Police and social care.</p> <p>E-learning package- Female genital mutilation - GOV.UK for interested staff or professionals (free home office e-learning) Posters/leaflets on FGM shared with staff and pupils.</p>
Forced marriage	<p>See further information from Gloucestershire Police about forced marriage What is forced marriage? Gloucestershire Constabulary</p> <p>Forced Marriage Resources Forced marriage resource pack - GOV.UK</p> <p>Forced Marriage e-learning package Forced Marriage Awareness - Free Course Virtual College</p> <p>The Freedom Charity (UK charity) have a helpline, text facility and app which can be downloaded to help to provide support and protection for victims of abuse, FGM or forced marriage.</p> <p>They can be contacted on tel: 0845 607 0133 or text 4freedom to 88802 or go to the website to download the app from the app page</p>
Gangs and youth violence	<p>Avenger task force leaflet GE trifold-new (2).pdf</p> <p>Task force set up to identify potential gang members as vulnerable individuals and potential victims and aims to help them</p>
Honour based violence (HBV)	<p>What is honour-based abuse? Metropolitan Police</p> <p>Honour' based violence (HBV) occurs when perpetrators believe a relative or other individual has shamed or damaged a family's or community's "honour" or reputation. Honour based violence cuts across all communities: Turkish, Kurdish, Afghani, South Asian, African, Middle Eastern, South and Eastern Europe for example. This is not an exhaustive list. Where a culture is heavily male dominated HBV may exist. The police have made it a high priority to help communities fight back to tackle both honour based violence and hate crime.</p> <p>The 'Honour Network Help line': 0800 5 999 247</p>

GASTRELLS OFFER OF EARLY HELP:

Private fostering	<p>https://www.gloucestershire.gov.uk/fostering/types-of-fostering/privatefostering/</p> <p>Gloucestershire County council website information on private fostering. Refer to Gloucestershire Children & Families Helpdesk on 01452 426565 or Gloucestershire Private Fostering Social Worker 01452 427874. To notify GCC of a private fostering arrangement ring: 01452 425320</p> <p>A private fostering arrangement is essentially one that is made without the involvement of a local authority. Private fostering is defined in the Children Act 1989 and occurs when a child or young person under the age of 16 (under 18 if disabled) is cared for and provided with accommodation, for 28 days or more, by someone who is not their parent, guardian or a close relative. relatives are defined as; step-parents, siblings, brothers or sisters of parents or grandparents).</p>
Preventing Radicalisation and Extremism/HATE (PREVENT duty)	<p>PREVENT Gloucestershire Safeguarding Children's Partnership</p> <p>Advise on PREVENT duty including training and referrals.</p> <p>Prevent duty training - GOV.UK Access training courses on the Prevent duty, the threat from terrorism and extremism in the UK and how to support people susceptible to radicalisation.</p> <p>Prevention: At Gastrells we teach traditional British values through the Curriculum: democracy, rule of law, respect for others, liberty, tolerance of those with different faiths and beliefs and promotion of 'Britishness'. E-safety is an important aspect of the curriculum to keep pupils safe from radicalisation.</p> <p>Pupils need to understand that radicalisation can be a form of grooming online and understand the notion of propaganda. They need to be taught to be discerning about what they read on the internet as the dangers of speaking to strangers online. Gastrells also seeks to equip parents with the knowledge of how to safeguard their children from radicalisation.</p> <p>Action Counter Terrorism is an excellent website for parents www.itai.info/ as is www.preventtragedies.co.uk While it remains very rare for school age children to become involved in extremist activity to the point of committing criminal acts, young people can be exposed to extremist influences or prejudiced views, including via the internet, from an early age. As with other forms of criminality or risk of harm, early intervention is always preferable. Schools, working with other local partners, families and communities, can help support pupils who may be vulnerable as part of wider safeguarding responsibilities.</p>
Sexting	<p>https://www.nspcc.org.uk/keeping-children-safe/online-safety/ (NSPCC website).</p> <p>Gloucestershire County Council online safety resources Keeping your child safe online Gloucestershire County Council</p> <p>NSPCC Safeguarding, sexting and sharing nudes NSPCC Learning</p> <p>Lucy Faithful Lucy Faithfull Foundation - Preventing child sexual abuse</p> <p>Prevention SCARF curriculum, online safety and external support from agencies including Gloucestershire police</p>

GASTRELLS OFFER OF EARLY HELP:

Trafficking	Serious crime which must be reported to Nigel Hatton (Gloucestershire LADO) and the Gloucestershire Police. Trafficking can include a young person being moved across the same street to a different address for the purpose of exploitation. It doesn't have to include people, children or young people being moved great distances. See
Children who run away (missing persons/missing children)	Missing persons Coordinator Gloucestershire Police Tel: 101 (Gloucestershire Police). See also: Missing persons Gloucestershire Constabulary Children missing in Education Children missing education - GOV.UK