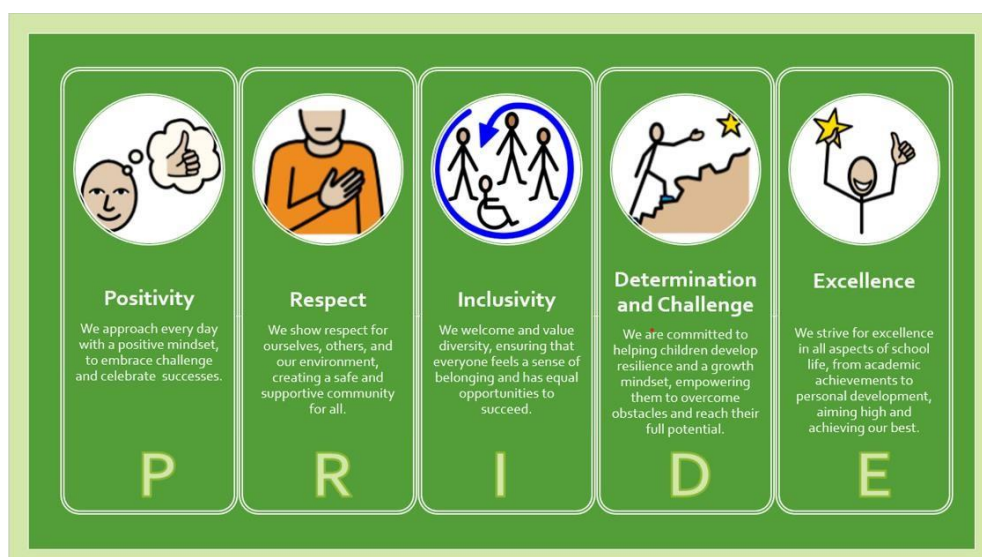


Gastrells Community Primary School



Team-Teach Policy Statement, supporting Gastrells Community Primary School's Behaviour Policy



Approved by: Standards Committee

Last reviewed on: January 2024

Next review due by: January 2026

Introduction

This policy statement is intended to be read in the context of the School's Behaviour Policy.

Team-Teach is a whole setting, behaviour management response that aims to use de-escalation and behaviour strategies as a standard response to challenging behaviour. This may include restrictive positive handling techniques.

Restrictive Positive Handling techniques are never used in isolation

The basic principles of Team-Teach are:

- At least two members of staff present when a situation occurs.
- An assumption that most situations can be resolved through calm, controlled, dignified and skilled de-escalation strategies.
- Minimum force and time.
- Last resort – all other behaviour management strategies to be tried and used first.
- Restrictive physical intervention techniques that provide a gradual, graded system of response – commensurate with the situation, task and individuals involved.
- Techniques allow for verbal communication – utilising positive relationships.

Examples of situations where positive handling maybe appropriate include:

- pupil attacks another pupil or member of staff
- pupil throws or threatens to throw something at another pupil or member of staff which would cause harm
- pupil is engaging in, or on the verge of committing, deliberate damage or vandalism to property
- pupil absconds, or attempts to abscond, from school or a room and in doing so would put themselves or others at risk (including running in a corridor or stairway when other children are moving around school)
- a pupil persistently refuses to leave a room
- a pupil behaves in such a way as to seriously disrupt the lesson or normal functioning of the school

Reasonable approaches used:

- holding for security and to reduce anxiety where there is potential risk
- physical interposing between students
- blocking a student's path
- escorting a pupil by hand or arm

All incidents involving pupils being physically managed will be recorded and evaluated.

More information about the Team Teach approach and accreditation can be found at www.teamteach.co.uk

Parents / carers will be asked by the Head Teacher to sign a 'Home School Agreement' (HSA), when their child joins the school. By signing the form the Parent / Carer will be indicating their agreement with the school's 'Behaviour Policy', and in signing the agreement, they are acknowledging the school's option to use reasonable force on their child in the circumstances described in the policy.