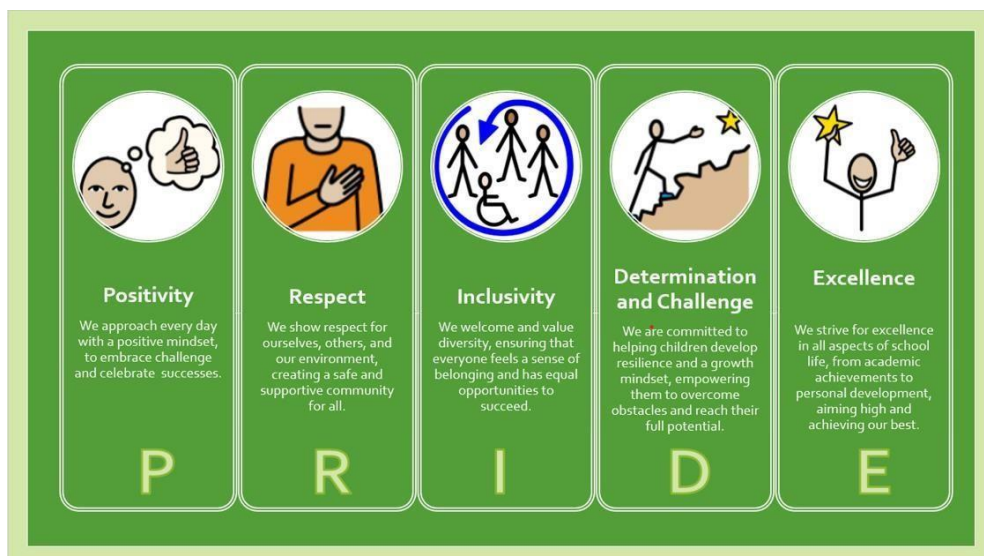




# Best Value Statement



**Approved by:** Standards Committee

**Last reviewed on:** September 2024

**Next review due by:** September 2026

Gastrells' Governing Body will continue to support the Headteacher in the allocation of resources and evaluation of current performance to ensure that substantial progress is made towards meeting the objectives set out in the School Improvement Plan. The best possible outcome for pupils will be secured in the most efficient and effective way.

## **WHAT IS BEST VALUE?**

The Governing Body will apply the four principles of *best value*:

- **Challenge** - Is the school's performance high enough? Why and how is a service provided? Do we still need it? Can it be delivered differently? What do parents want?
- **Compare** - How does the school's pupil performance and financial performance compare with all community primary schools? How does it compare with similar community primary schools?
- **Consult** – How does the school seek the views of stakeholders about the services the school provides?
- **Compete** – How does the school secure efficient and effective services? Are services of appropriate quality, economic?

The Governors and Headteacher will apply the principles of *best value* when making decisions about:

- The allocation of resources to best promote the aims and values of the school
- The targeting of resources to best improve standards and the quality of provision
- The use of resources that best support the various educational needs of all pupils.

## **Effective Challenge**

The Governing Body and school leaders will continue to challenge proposals, examining them for effectiveness, efficiency, cost and with a view to preventing any duplication of costs. For example - staffing changes, changes in the use of premises and purchase of IT equipment.

The governors will ensure that the school will report on Pupil Premium payments, what interventions the money is spent on and they will monitor the impact and effectiveness of these interventions on the children's progress and attainments. The governors will ensure that the reporting of this is clear and transparent, in line with the Department for Education's requirements.

## **Effective Comparison**

The school's performance will be monitored against schools nationally and locally using data such as ASP (analyse school performance), County Analysis data statistics and the School Data Dashboards produced by Ofsted and Fischer Family Trust (FFT) (data analysis system). The school's rigorous Self Evaluation Programme will continue to be developed in line with good practice and best advice from our School Advisor and other external standards such as Ofsted. We will also continue to use effective school based monitoring systems to show progress and attainment.

The school's financial performance will be benchmarked against other like schools within the local authority and nationally.

### **Effective Consultation**

Regular newsletters will continue to be sent to parents informing them of activities. All parents now have access to a regularly updated school Blog showing the school activities that children have participated in. We will continue to use questionnaires to seek parental views on possible developments. We will continue to liaise with our Parents' Forum and consult with them on developments within school. The school has a Parent--Staff Association known as Friends of Gastrells (FoG), that assists in dissemination of information as well as supporting the school in many practical and financial activities. Extended school partners, such as Heads' Clusters, Stroud Area Schools (SAS), Gifted & Talented Clusters, SEND Cluster, help disseminate guidance, give support and feedback, and sharing resources so that Best Value can be obtained.

A thriving school council exists with representatives from Year 1 upwards and is a useful source of ideas to improve the whole day experiences of the pupils at Gastrells School. A separate Eco-Council has been formed with representatives from Year 1 upwards and this monitors energy efficiency in school as well as looking at other ways of developing Gastrells School into a more eco-friendly environment.

### **Being Competitive**

The Governing Body will continue to evaluate the services school requires (payroll, personnel, absence insurance and the school's office's IT) including those provided by the County Council to ensure *best value* is achieved.

The purchase of supplies (Consortium, utility companies) will be assessed regularly on the grounds of cost, quality and service to ensure *best value*. We will continue to join with other schools in the SAS (Stroud Association Schools) group to purchase resources together, when appropriate, and so use economies of scale to ensure best value is obtained.

We will ensure that the procedures contained in the Finance Policy are adhered to with regard to making savings in costs and seeking tenders within the purchasing limits quoted. We will also ensure that time and resources are not wasted in investigating minor areas where few improvements can be achieved if this would incur substantial time or costs in administration. We acknowledge that time wasted on minor improvements or savings can adversely impinge on effective management in more important and valuable areas.